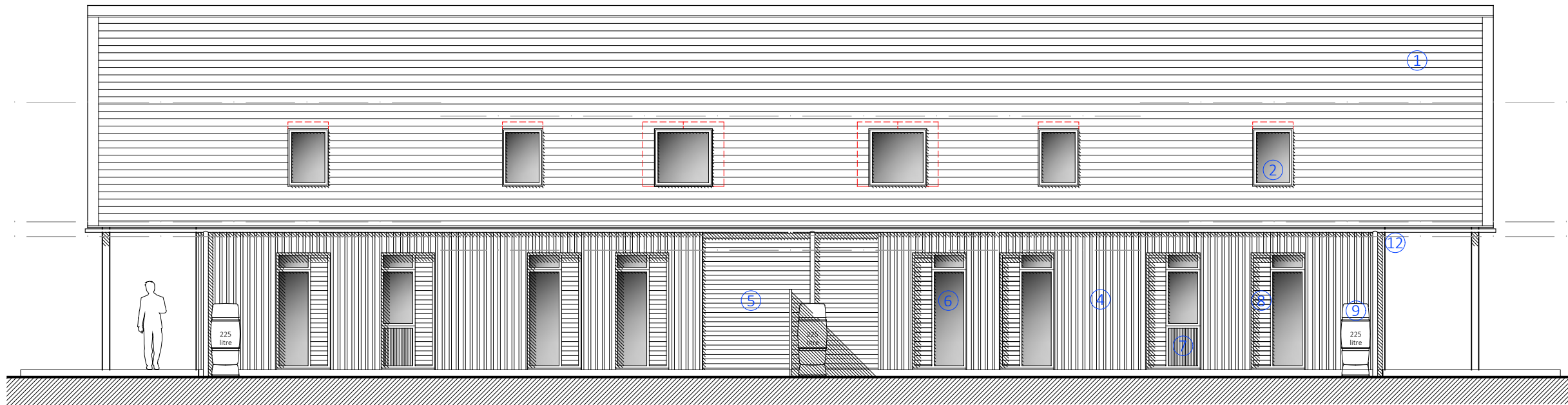


PROPOSED ELEVATIONS & SECTIONS 1:100

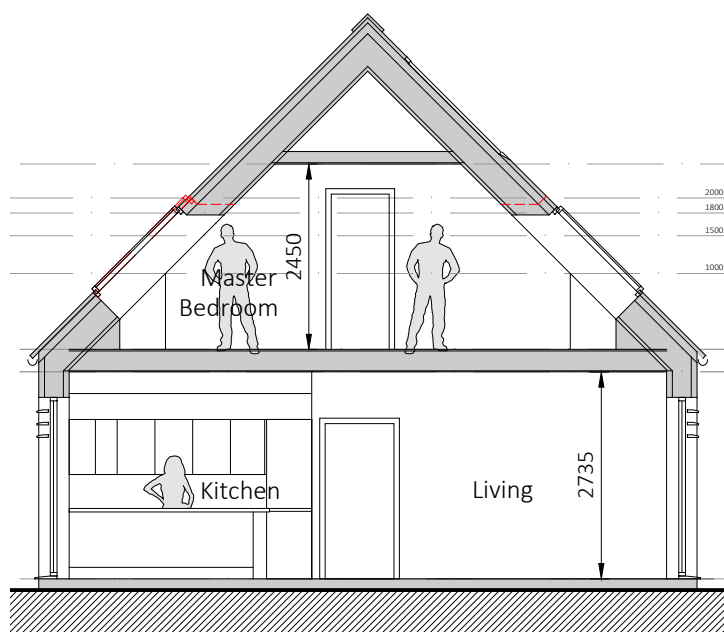
STATUS:
PRELIMINARY
 Note: Scaling from this drawing is permitted for planning purposes



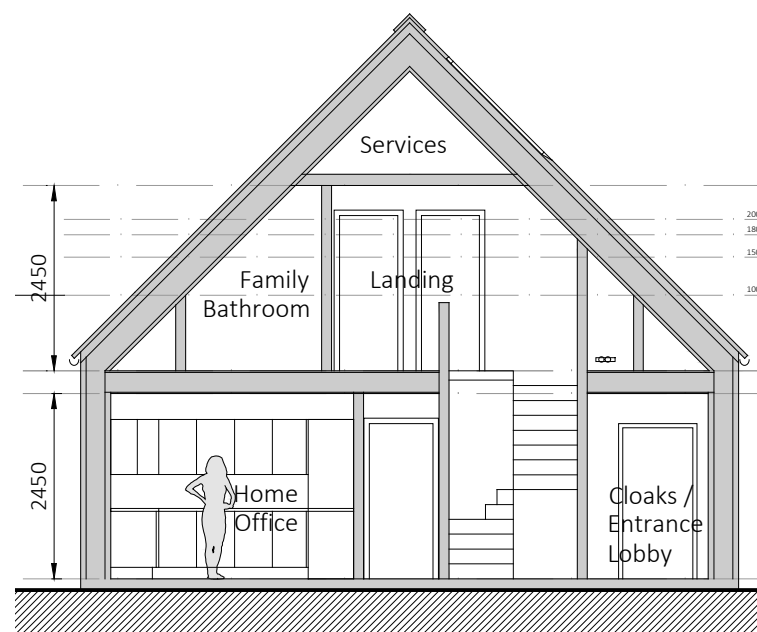
North / Rear Elevation

Materials/Notes:

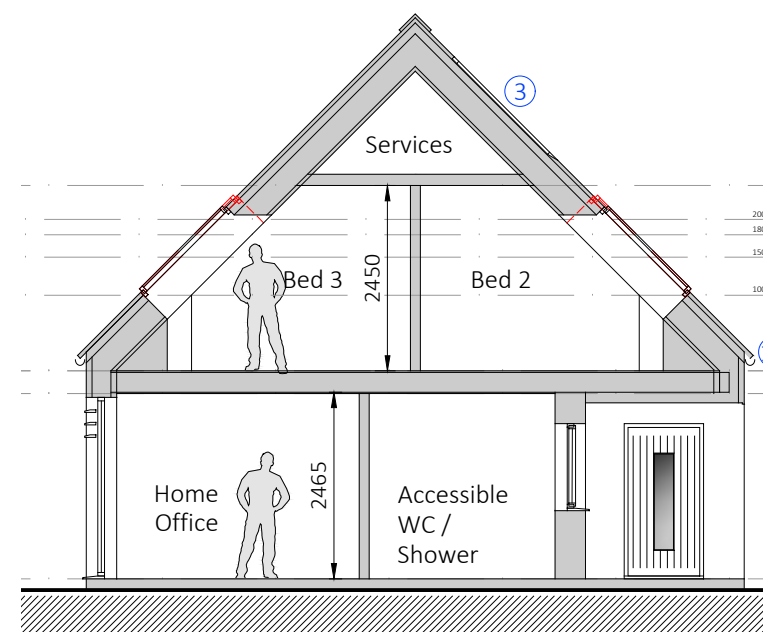
- 1 Fibre cement tile, grey/black finish
- 2 Rooflights, grey finish
- 3 Photovoltaic panels
- 4 Timber staggered cladding, dark stain finish with vertical boarding
- 5 Timber, horizontal boarding and light stain finish
- 6 Composite windows - grey finish
- 7 Timber spandrel panel by kitchen units
- 8 Controllable louvre vents incorporated into window frame
- 9 Water butts to each downpipe
- 10 Louvre shading slats not incl. on north elev.
- 11 Recessed entrance area
- 12 Galvanised steel rainwater goods, natural finish



Section A-A

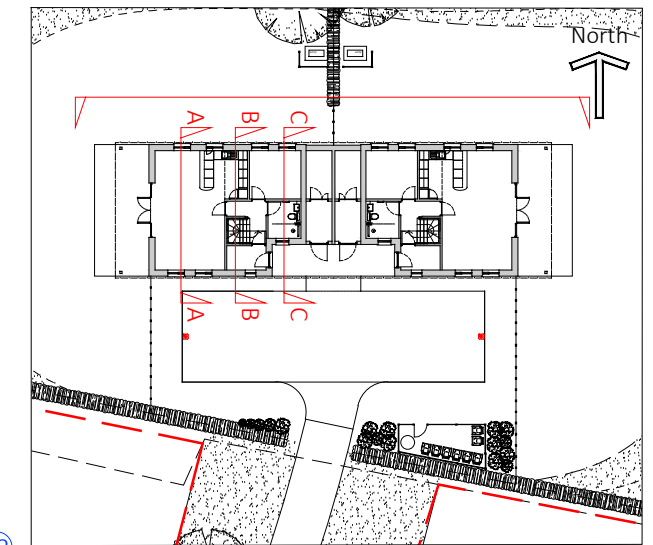


Section B-B



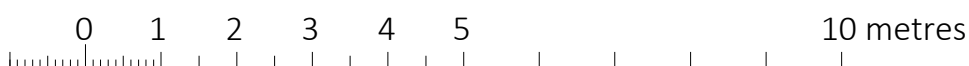
Section C-C

Key



Rev.	Date	Drawn	Details
P5	26/02/26	MJ	Bed 2/3 rooflights reduced to single / amended. All rooflights reduced in height by 200mm
P3	12/02/26	MJ	Rooflights reduced / amended. Roofing material amended

©This drawing is the copyright of Judge Architects Ltd and should not be copied or reproduced without written consent. All Rights Reserved. Do not scale from this drawing. Check all dimensions before fabrication and notify of any discrepancies.



Judge Architects Ltd

21 Oxenturn Road, Wye, Ashford, Kent, TN25 5BH - 07967 191686 - judge.architects@gmail.com

Project Rural Worker Dwellings, TN27 OES Title Proposed Elevation & Sections

Client Bridgend Recycling (BMW Spares) Cale Hill Road, Little Chart, Ashford

Scale 1:100 Size A3 Drawn MJ Chk'd Date

Drawing Number **22-20-17** Rev. **P4**